



## **LAN WorkGroup 5 for MS Windows and DOS: Product Details**

LAN WorkGroup™ 5 for MS Windows and DOS provides Windows and DOS users on NetWare® networks with concurrent access to a variety of TCP/IP network resources. It includes all the powerful Windows and DOS applications, as well as the familiar, easy-to-use interface found in Novell's award-winning LAN WorkPlace® 5 for MS Windows and DOS software. It also includes transparent NFS file sharing, Windows TN3270 terminal emulation, remote command execution, remote printing, network information utilities, and support for all standard application programming interfaces. LAN WorkGroup simplifies network management by providing centralized installation, workstation configuration, and IP address assignment and maintenance. It is an ideal solution for companies with NetWare networks that want to standardize on LAN WorkPlace.

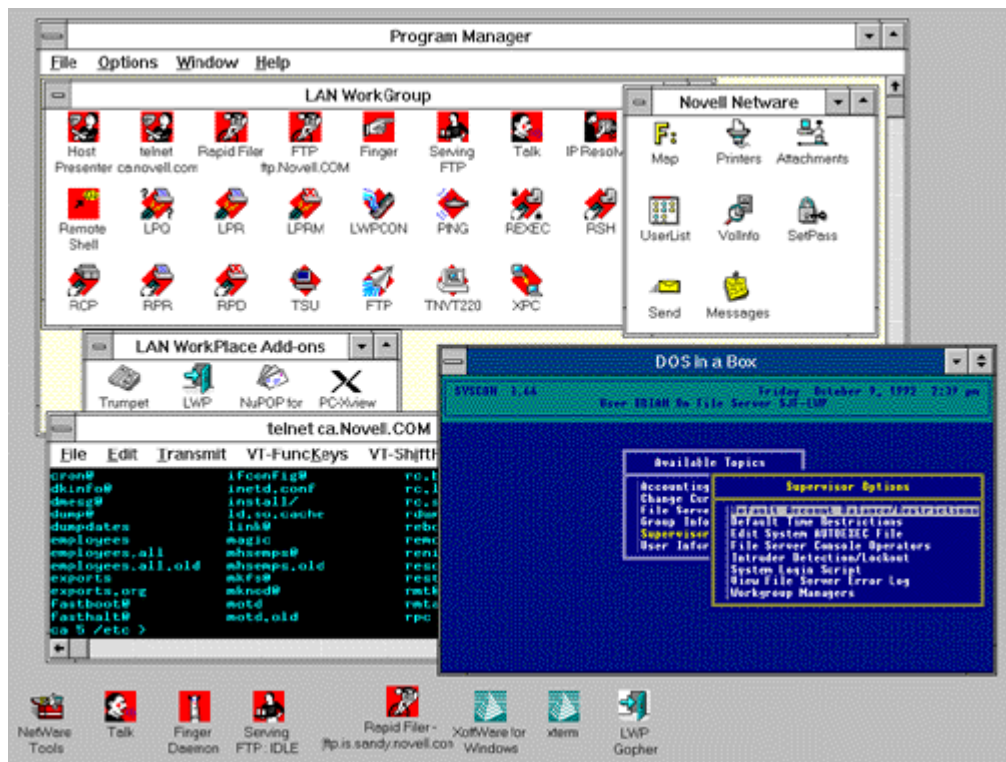
NFS Client for LAN WorkPlace is also included with LAN WorkGroup. It provides transparent access to files on remote NFS servers, as if the files were on your local hard disk. With NFS Client, you can also use UNIX printers on the network by redirecting DOS printer ports to UNIX print queues. NFS Client provides high performance and reliability while using only a small amount of RAM.

### **Features**

LAN WorkGroup provides the same award-winning features found in LAN WorkPlace 5. (For details, see the LAN WorkPlace 5 for MS Windows and DOS product section.) In addition, LAN WorkGroup provides the following features:

- Centralized maintenance and administration from a NetWare 4™ or NetWare 3™ server
- Centralized TCP/IP workstation configuration and IP addressing using Bootstrap Protocol (BOOTP) NetWare Loadable Module™ (NLM)

**Figure 1: LAN WorkGroup offers Windows and DOS NetWare clients quick and easy access to NetWare, TCP/IP, and Internet resources.**



### Centralized Maintenance and Administration

You can centrally install and upgrade LAN WorkGroup on your NetWare server; this greatly reduces administration time and costs for companies with large networks. LAN WorkGroup also has timesaving network management features that automatically configure and assign IP addresses for each workstation and allow you to monitor and maintain the health of your network from a central location.

### Options

NetWare NFS Gateway provides complementary transparent file access in the NetWare environment. (For details, see the NetWare NFS 1.2C/NetWare NFS Gateway 1.2 Bundle for NetWare 3 product section.)

### Hardware Requirements

#### Server

- 386-based PC or above
- 4.5MB of free disk space (minimum)

#### Client

- 386-based PC or above
- 4MB of RAM (minimum)

#### Network Adapter

One of the following:

- Novell® EXOS 205T™, EXOS 205L™, EXOS 215T™, NE1000™, or NE2000™ network adapter
- 3Com EtherLink 3C501, 3C503, 3C505, or 3C523

- IBM Token-Ring Adapter I or II
- RX-Net™ ARCnet or any other adapter with corresponding Open Data-Link Interface™ (ODI) drivers
- Any Fiber Distributed Data Interface adapter that includes ODI™ support
- Any other adapter that includes ODI support

## **Software Requirements**

### **Server**

- NetWare 3.12 NOS or above

### **Client**

- Windows 3.0 or above (optional)
- PC-DOS or MS-DOS 3.3 or above, DR DOS 6.0 or above, or Novell DOS™ 7.0

## **Implementation**

Because you can perform a single installation of LAN WorkGroup on a NetWare server, all licensed users can share the copy. It provides a platform from which you can perform global updates, configure workstations, and monitor use—all from a central location.

You can also centrally provide IP addresses, subnet masks, and default gateways for each workstation. You may assign IP addresses yourself or allow the BOOTP servers to perform this task automatically.

LAN WorkGroup is available on CD-ROM.

## **Specifications**

LAN WorkGroup supports the following U.S. Department of Defense IP standards:

Address Resolution Protocol: RFC 826  
 Bootstrap Protocol: RFCs 951, 1395  
 Domain Name System Resolver: RFCs 1034, 1035  
 Finger: RFC 1288  
 File Transfer Protocol: RFC 959  
 Internet Control Message Protocol: RFCs 792, 950  
 IP Broadcast Datagrams: RFC 919  
 IP Broadcast Datagrams with Subnets: RFC 922  
 Internet Protocol on IEEE 802: RFC 1042  
 IP on ARCnet: RFC 1201  
 IP on Ethernet: RFC 894  
 IP: RFCs 791, 1349  
 IP Subnet Extension: RFC 950  
 IPX over IP Tunneling: RFC 1234  
 Line Printer Daemon Protocol: RFC 1179  
 Management Information Base: RFC 1213  
 NetBIOS Service Protocol on TCP/IP: RFCs 1001, 1002  
 NFS Protocol: RFC 1094  
 Reverse Address Resolution Protocol: RFC 903  
 Remote Procedure Call: RFC 1057  
 Serial Line Internet Protocol: RFC 1055  
 Simple Network Management Protocol: RFC 1157

TCP: RFC 793 (0-64 sockets)

Telnet Protocol: RFC 854

Trivial File Transfer Protocol: RFC 783

User Datagram Protocol: RFC 768 (0-32 sockets)

Van Jacobsen TCP/IP Header Compression RFC: 1144

### **Ordering Information**

You can order LAN WorkGroup 5 for MS Windows and DOS from any Novell Authorized, Gold, or Platinum Partner. For more information, contact your local Novell office or call the Novell Customer Response Center at 1-801-228-4CRC (1-801-228-4272). Or, in the United States and Canada, call toll free 1-888-321-4CRC (1-888-321-4272). You may also visit Novell's World Wide Web site at <http://www.novell.com> or use Novell's Product Information FaxBack system at 1-801-861-3030. Or, in the United States and Canada, call 1-800-209-3500.

© 1997 Novell, Inc.